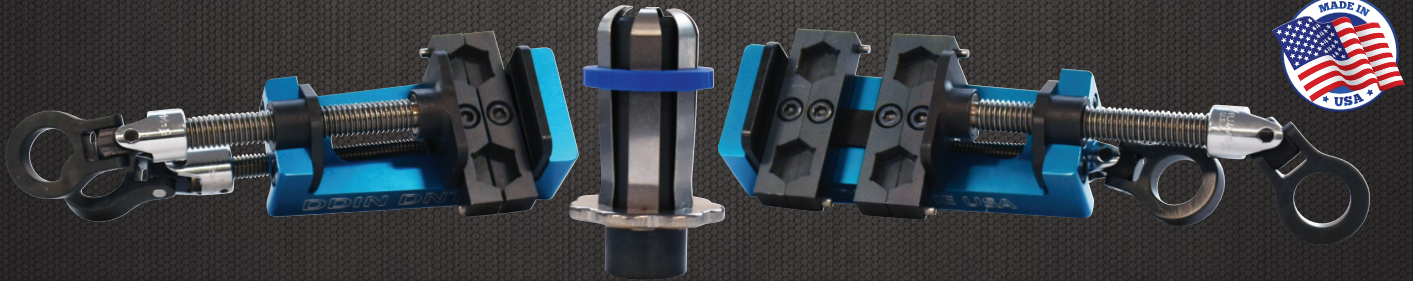


ACCELERATE PAD-TO-PAD CONNECTIONS



WITH THE DDIN TRI-CLAMP

The Tri-Clamp™ is a patented, multi-plane clamp that cradles bolts securely in accordance with NEMA spacing then clasps itself to the mounting pad of a connecting jumper line. The resulting bolt stability creates a process efficiency that cuts connecting times by as much as 65%.

A starter socket that holds a nut, lock washer, and washer in alignment simultaneously enabling linemen to safely seat all 3 onto their corresponding bolt in one motion thereby eliminating dropped washers and facilitating faster more systematic connections. This tool reduces linemen exposure and makes an otherwise hazardous task more practical and drastically safer.

KIT INCLUDES:

- One - 2 Bolt Clamp
- One - 4 Bolt Clamp
- Two - Tri-Clamp™ Hot Sockets
- One-Carrying Case

See it in action



4 Easy Steps when using the Tri-Clamp™



The Tri-Clamp™ is Available from:

TALLMAN
EQUIPMENT CO., INC.
EMPLOYEE OWNED

www.tallmanequipment.com

Call Toll Free: 877-860-5666

International: 630-860-5666

